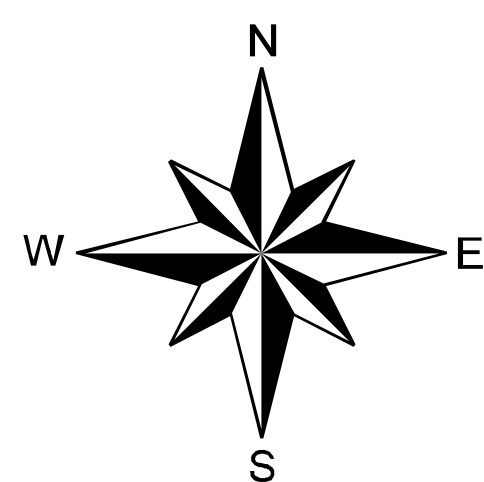


# MAP 59-344C

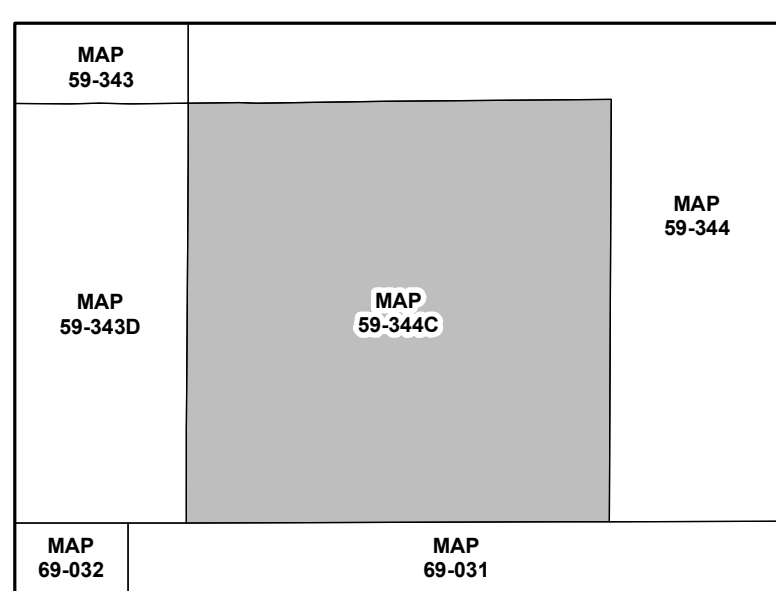


**JEFFERSON COUNTY COLORADO**

**Scot Kersgaard Assessor**



(Initially plotted at 1 inch = 50 feet, or 1:600)



MAP INDEX

22	21	20	29	T 2 S	06	05	04	03	02	01																
32	31	30	39	T 3 S	07	08	09	10	11	12																
42	41	40	49	T 4 S	18	17	16	15	14	13																
52	51	50	59	T 5 S	19	20	21	22	23	24																
62	61	60	69	T 6 S	30	29	28	27	26	25																
72	71	70	79	T 7 S	31	32	33	34	35	36																
82	81	80		T 8 S	<p><b>SECTION INDEX</b></p> <table border="1"> <tr> <td>B 2</td><td>A 2</td><td>B 1</td><td>A 1</td> </tr> <tr> <td>NW</td><td>CD</td><td>NE</td><td>CD</td> </tr> <tr> <td>B 3</td><td>A 3</td><td>B 4</td><td>A 4</td> </tr> <tr> <td>SW</td><td>CD</td><td>SE</td><td>CD</td> </tr> </table>						B 2	A 2	B 1	A 1	NW	CD	NE	CD	B 3	A 3	B 4	A 4	SW	CD	SE	CD
B 2	A 2	B 1	A 1																							
NW	CD	NE	CD																							
B 3	A 3	B 4	A 4																							
SW	CD	SE	CD																							
92	91	90		T 9 S																						
02	01			T 10 S																						

SECTION INDEX

**QUARTER SECTIONS**

B 2	A 2	B 1	A 1
NW	CD	NE	CD
B 3	A 3	B 4	A 4
SW	CD	SE	CD

QUARTER SECTIONS

**TOWNSHIP INDEX** (State Assigned 4-Digit Township Code: 2079)

Parcel Identification Numbers (PINs) in Jefferson County are based on the township, section, and quarter section the parcel falls within. PINs follow the pattern TT-SSQ-BB-LLL. TT is the two-digit township code; SS is the two-digit section number; Q is the quarter section code; BB is the two-digit parcel block number; LLL is the three-digit parcel lot number. When a parcel falls within two or more quarter sections, in most cases the PIN will be based on the quarter section (along with its associated township and section) with the most area within the parcel. Township codes, section numbers, and quarter section codes can be found in the indices above. Parcel block numbers are found enclosed in hexagons (⬡) on the map. Parcel lot numbers are found enclosed in ovals (⊖) on the map.

**DISCLAIMER**

Caution: This map is for assessment purposes only. It is not necessarily accurate by surveying standards. DO NOT USE FOR LEGAL CONVEYANCE. Subsequent editions with updated information will be published on a continual basis. Therefore, the information contained on this map may be modified or altered.

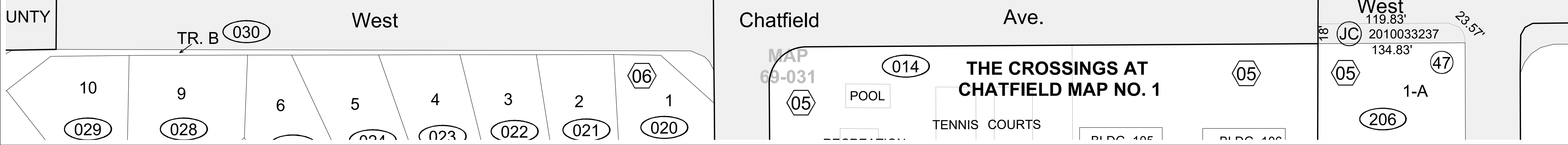
**KEY**

- Section Lines
- Tie Bar Lines
- Subdivision Lines
- Quarter Section/Tie Bar Lines
- Township Lines
- County Boundaries
- All Others
- Mapsheet Boundaries
- Rights of Way, Water, and Railroads (areas without parcel numbers)
- Metes and Bounds Associated Parcels (block numbers 99 and 00)

This map was last updated on Wednesday, May 25, 2016 at 09:27 AM.  
<https://aprsimages.jeffco.us/aprs/pdfs/jmap59-344c.pdf>  
 Projection Information:

State Plane Coordinate System  
 Colorado Central Zone (3476)  
 North American Datum 1983 (NAD83)  
 GRS1980 Spheroid, Units Feet

Marginalia (only) was updated on Tuesday, September 14, 2021



JEFF. CO. 94072023

Estes

South

63.4  
16.24  
JC